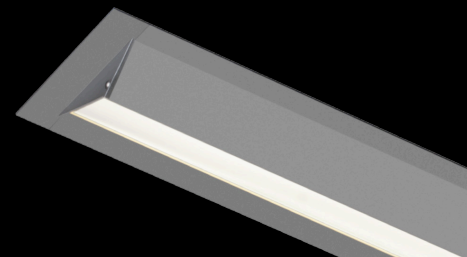
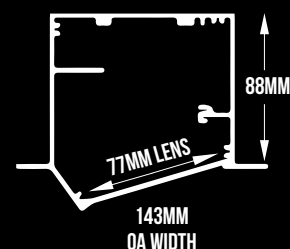




AR143



ITEM CODE	WATTAGE	COLOR TEMP	DIM (MM)	LED IM
143235	35W	2700K	1000X143X88	2552LM/M
143335	35W	3000K	1000X143X88	2591LM/M
143435	35W	4000K	1000X143X88	2645LM/M



Materials

Extruded aluminium profiles with high quality durable UV stabilized diffuser.



Applications

Offices, hospitality, schools, art galleries, museums, halls, hospitals, malls, accent lighting, retails and large indoor open areas.

Options

- **Dimming:** DALI and DSI dimming
1-10V dimming
- **CRI 95+**
- **Color Temperatures :** 2700K, 3000K, 4000K, 5000K and 6000K
- **Individual luminaire or continuous runs**
- **Customised wattages**
- **RGB LED boards**
- **Emergency modules**
- **Bends**

Features:

- Recessed asymmetric wall-washer profile with 143mm of width.
- Asymmetric lens highlights focused objects.
- Continuous runs with uniform output, 100mm incremental length.
- Provides continuous, dot-free homogeneous light output.
- Superior quality components for optimum performance.
- Plug and play system with factory fitted components for quick installation.
- High quality LED modules with CRI85.
- Integral driver.
- 100% recyclable, extruded architectural grade T6061 aluminium with 2mm minimum wall thickness.
- Life: 50,000 hours L90/B10.