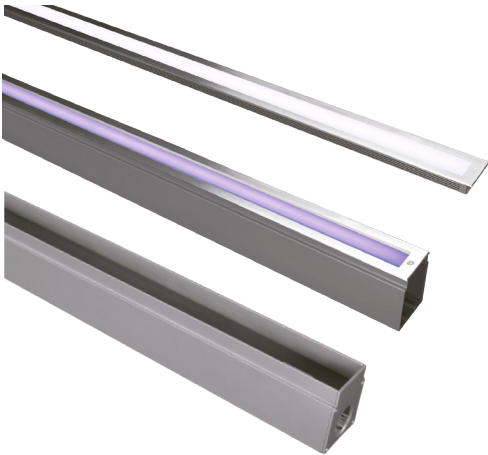
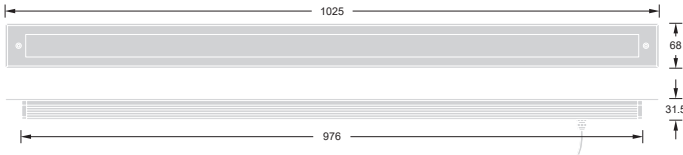
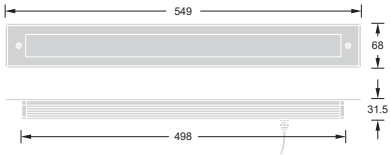


# Aqua II Inground Linear



Item Code	550349	550397
Wattage	48 x 0.3W	96 x 0.3W
Beam Angle	120°	120°
Colour Temp.	3000K	3000K
LED lm	258lm	518lm
Dim.(mm)	549 x 68	1025 x 68

\* Specify for other colour temperatures.



**Features:**

- Soft Beam rectangular recessed inground light with options of 48 x 0.3W and 96 x 0.3W LED.
- Protection class IP67 with silicone seal.
- Extruded aluminium and die cast aluminium housing with high corrosion resistance.
- IP68 PG-9 PVC cable gland.
- 6mm thick tempered high-resolution glass diffuser.
- Body frame and the diffuser is aligned to avoid obstruction.

- Choice of clear or frosted glass.
- 316 high grade stainless steel trim.
- Choice of 12°/24°/36° beam angles for various illumination applications.
- Standard 280mm and 350mm lengths.
- 3000K colour temperature as standard.
- Available colours 3000K, 4000K, 5000K and 6000K optional.
- No IR, No Mercury.
- 50,000 hours long life, low maintenance.

**Applications:**

- Exterior Facade Walls, Building Vicinity, Walkways and Ramps.

**Materials/Finish:**

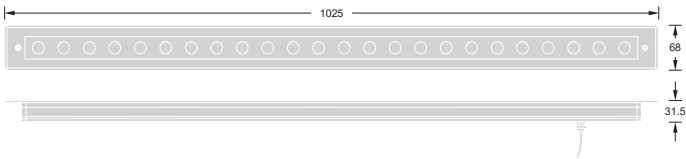
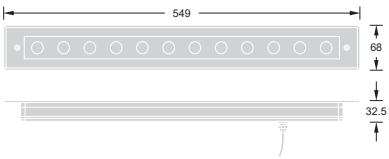
- Extruded aluminium and die cast aluminium housing with high corrosion resistance, 316 high grade stainless steel trim with 6mm thick tempered glass.

# Aqua II Inground Linear



Item Code	550312	550313	550324	550325
Wattage	12 x 1.5W	12 x 1.5W	24 x 1.5W	24 x 1.5W
Beam Angle	20°	30°	20°	30°
Colour Temp.	3000K	RGB	3000K	RGB
LED lm	1020lm	•••	2055lm	•••
Dim.(mm)	549 x 68	549 x 68	1025 x 68	1025 x 68

\* Specify for other colour temperatures.



**Features:**

- Soft Beam rectangular recessed inground light with options of 12 x 1.5W and 24 x 1.5W LED.
- Protection class IP67 with silicone seal.
- Extruded aluminium and die cast aluminium housing with high corrosion resistance.
- IP68 PG-9 PVC cable gland.
- 6mm thick tempered high-resolution glass diffuser.
- Body frame and the diffuser is aligned to avoid obstruction.

- Choice of clear or frosted glass.
- 316 high grade stainless steel trim.
- Choice of 12°/24°/36° beam angles for various illumination applications.
- Standard 650mm and 920mm lengths.
- 3000K colour temperature as standard.
- Available colours 3000K, 4000K, 5000K and 6000K optional.
- No IR, No Mercury.
- 50,000 hours long life, low maintenance.

**Applications:**

- Exterior Facade Walls, Building Vicinity, Walkways and Ramps.

**Materials/Finish:**

- Extruded aluminium and die cast aluminium housing with high corrosion resistance, 316 high grade stainless steel trim with 6mm thick tempered glass.