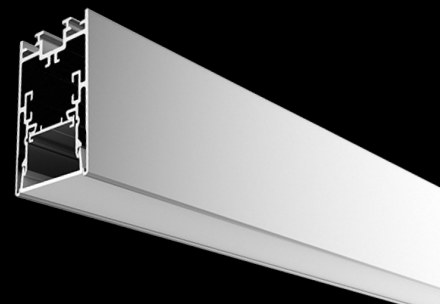
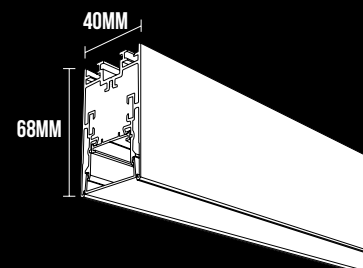




# S40



ITEM CODE	WATTAGE	COLOR TEMP	DALI/DSI	LED IM
401220	20W	2700K	1000 X 40 X 68	1710LM/M
401320	20W	3000K	1000 X 40 X 68	1770LM/M
401420	20W	4000K	1000 X 40 X 68	1820LM/M



## Materials

Extruded aluminium profiles with high quality durable UV stabilized diffuser.



## Applications

Offices, hospitality, schools, hospitals, malls, accent lighting, retails, large indoor open areas.

## Options

- **Dimming:** DALI and DSI dimming  
1-10V dimming
- **CRI 95+**
- **Color Temperatures :** 2700K, 3000K, 4000K, 5000K and 6000K
- **Individual luminaire or continuous runs**
- **Customised wattages**
- **RGB LED boards**
- **Emergency modules**
- **Bends:**



## Features:

Sleek modern design aluminium profile with 40mm of width.

Versatile profile suitable for all applications, i.e. recessed, surface mount and suspended.

Provides continuous, dot-free homogeneous light output.

Superior quality components for optimum performance.

Clean-cut magnetic end-caps, no screws.

Seamless joints with speedy connectors.

Plug and play system with factory fitted components for quick installation.

High quality LED modules with CRI85.

Choice of integral or remote driver.

Incremental length 50mm.

Available with suspension wires, brackets for surface mount and trimless recessed installations.

Life: 50,000 hours L90/B10.