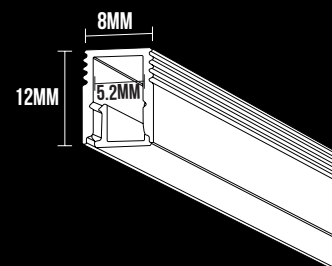


S8



ITEM CODE	WATTAGE	COLOR TEMP	DIM. (MM)	LED IM
812210	10W	2700K	1000 X 8 X 12	680LM/M
812310	10W	3000K	1000 X 8 X 12	750LM/M
812410	10W	4000K	1000 X 8 X 12	800LM/M



### Materials

Extruded aluminium profiles with durable UV stabilized diffuser.



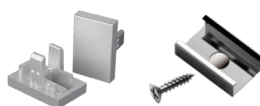
### Applications

Joinery lighting, cabinet lighting, display lighting, cove lighting, accent and indirect lighting.

### Options

- Dimming: DALI and DSI dimming  
1-10V dimming
- CRI 95+
- Color Temperatures : 2700K, 3000K, 4000K, 5000K and 6000K
- Individual luminaire or continuous runs
- Customised wattages
- RGB LED boards
- Emergency modules

### Accessories



### Features:

- Surface mount super slim profile width 8mm.
- 2 step MacAdam ellipse for highest colour consistency.
- High quality extruded aluminium profiles.
- Frosted lens for uniform and smooth illumination.
- Dot free, continuous homogeneous lighting effect.
- 50mm incremental length, continuous runs.
- Remote 24V driver, single driver for multiple lengths, cost effective solution.
- Life: 50,000 hours L90/B10.
- Easy to install with mounting brackets.