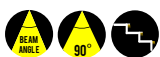
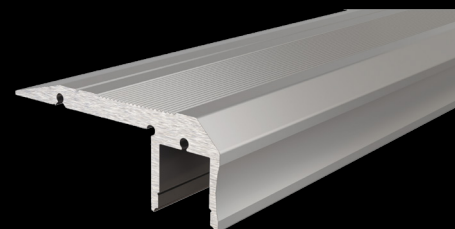
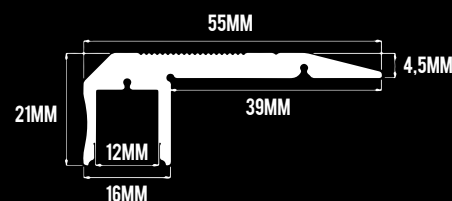


ST16



ITEM CODE	WATTAGE	COLOR TEMP	SIZE (MM)	LED IM
160205	5W	2700K	1000X55X21	320LM/M
160305	5W	3000K	1000X55X21	359LM/M
160405	5W	4000K	1000X55X21	387LM/M



Materials

Extruded architectural grade T6061 aluminium housing with clear or frosted extruded acrylic lensed body.

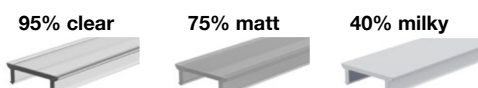


Applications

Stairs, landings, edges, indirect lighting, optical mark the stages, direct edge lighting, accent lighting and architecture.

Options

- Dimming: DALI and DSI dimming 1-10V dimming
- CRI 95+
- Color Temperatures : 2700K, 3000K, 4000K, 5000K and 6000K
- Individual luminaire or continuous runs
- Customised wattages
- RGB LED boards
- Emergency modules
- Diffuser:



Accessories

End-cap



Features:

Very solid, robust and distortion-inflammatory profile, with a thickness in the tread of 4.5mm, can be easily shortened.

High quality modern and timeless design for the use of rigid and flexible LED strips.

Homogeneous lighting effect, no dazzle with the correct covers.

Surface profile for quick installation.

Perfect for the illumination of stairs and edges.

Standard available sections in 1m, 1.5m and 3m, other custom lengths upon request.

75% Matt diffuser as standard.

Life: 50,000 hours L90/B10.