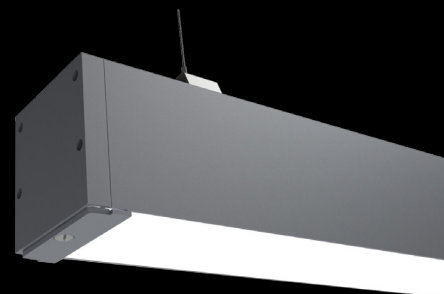
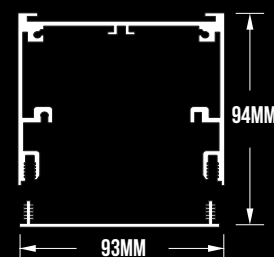


WET93



ITEM CODE	WATTAGE	COLOR TEMP	SIZE (MM)	LED LM
930250	50W	2700K	1000X93X94	3650LM/M
930350	50W	3000K	1000X93X94	3639LM/M
930450	50W	4000K	1000X93X94	3702LM/M



Materials

Extruded aluminium body, aluminium sealed end caps. Opal diffuser.

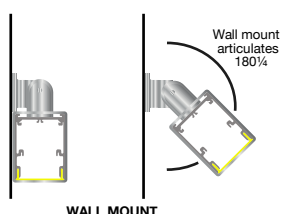


Applications

Ideal to use in Airports, train stations, bus stations, malls, educational facilities, healthcare, swimming pools, pergolas and exterior applications.

Options

- **Dimming:** DALI and DSI dimming 1-10V dimming
- **CRI 95+**
- **Color Temperatures :** 2700K, 3000K, 4000K, 5000K and 6000K
- **Individual luminaire or continuous runs**
- **Customised wattages**
- **RGB LED boards**
- **Emergency modules**
- **IP54**



Features:

Surface mount or suspended profile completely sealed to IP66 for indoor and outdoor in extreme conditions.

100mm incremental length.

Provides continuous, dot-free homogeneous light output.

Superior quality components for optimum performance.

Plug and play system with factory fitted components for quick installation.

High quality LED modules with CRI85 as standard.

Extruded architectural grade T6061 aluminium, 100% recyclable.

Life: 50,000 hours L90/B10.