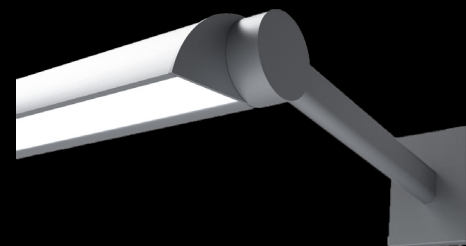
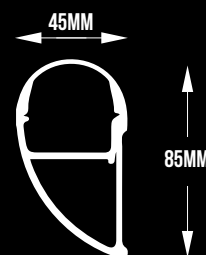


WM45



ITEM CODE	WATTAGE	COLOR TEMP	DIM. (VMD)	LED IM
450222	22W	2700K	1000X45X85	2074LM/M
450322	22W	3000K	1000X45X85	2109LM/M
450422	22W	4000K	1000X45X85	2168LM/M



Materials

Extruded aluminium profiles with high quality durable UV stabilized diffuser.



Applications

Offices, hospitality, schools, art galleries, museums, hospitals, malls, accent lighting, retail shops, large indoor open areas.

Options

- **Dimming:** DALI and DSI dimming
1-10V dimming
- **CRI 95+**
- **Color Temperatures :** 2700K, 3000K, 4000K, 5000K and 6000K
- **Individual luminaire or continuous runs**
- **Customised wattages**
- **RGB LED boards**
- **Emergency modules**

Features:

Asymmetric wall-washer profile with 45mm of width.

Adjustable profile for wall-washing applications.

Continuous runs with uniform output, 100mm incremental length.

Provides continuous, dot-free homogeneous light output.

Superior quality components for optimum performance.

Plug and play system with factory fitted components for quick installation.

High quality LED modules with CRI85 as standard.

Extruded architectural grade T6061 aluminium, 100% recyclable.

Life: 50,000 hours L90/B10.

